

## Smiling for Smiddy

# 20 years of funding cancer research



### Honouring a legacy

Smiling for Smiddy was established in 2006 to commemorate Adam Smiddy, a gifted physiotherapist and triathlete who tragically passed away from melanoma at the age of 26. Prior to his passing, Adam often spoke about his dream of riding from Brisbane to Home Hill, his hometown on the outskirts of Townsville. He shared the idea with his close mate Sharky, who acknowledged it but hadn't yet committed. After Adam passed away on 6 August, Sharky was on the bike within weeks, joined by two mates—Ron, a friend of Sharky's, and Ollie, a mate of both Sharky and Adam. Together, they rode 1,600 kilometres and raised \$24,000 to support the fight against cancer.

What began as a tribute ride has grown into a powerful movement, rallying athletes and supporters to fund life-saving cancer research at Mater. Since 2006, Mater Smiling for Smiddy has contributed over \$16 million to essential cancer research at Mater. This research has had profound national and international impacts, driving advancements in immunology, anti-cancer vaccines, new drug development, and methods to mitigate the side effects of cancer treatments.

### Why we ride, run, swim or rally

Cancer continues to affect 1 in 2 Australians by the age of 85 and melanoma, prostate, breast, and ovarian cancers remain among the most diagnosed and deadly\*. **Smiddy fundraisers are helping change that—one kilometre, one dollar, one breakthrough at a time.**

### Where your funds go

Funds are used to support dedicated teams of researchers at Mater Research, who are working

on potentially life-saving research into the causes, prevention and treatment of various types of cancer.

### Your support has lasting impact

Smiddy isn't just about fundraising—it's about community, courage, and connection. Your support helps fund treatments that save lives, stories that inspire, and a future where cancer is no longer a life sentence.

### Be part of the movement

Whether you're riding, running, donating, or cheering from the sidelines, you're helping to make a real difference.

Smiddy's story is one of connection—between mates, milestones, and moments that matter. What began as a one-off ride to honour a mate lost to cancer has grown into a powerful movement that's helped drive real progress in cancer research at Mater.

Now, as we look to the future, your support can help shape what comes next. It's a long, tough road—but together, we can go beyond.

### So, we ask simply: Are you in?

**Join or donate today: [smiddy.org.au](https://smiddy.org.au)**

Every dollar raised supports Mater Research, funding cutting-edge projects including:



Immunotherapy breakthroughs for melanoma and ovarian cancer



Precision medicine targeting genetic defects in tumours



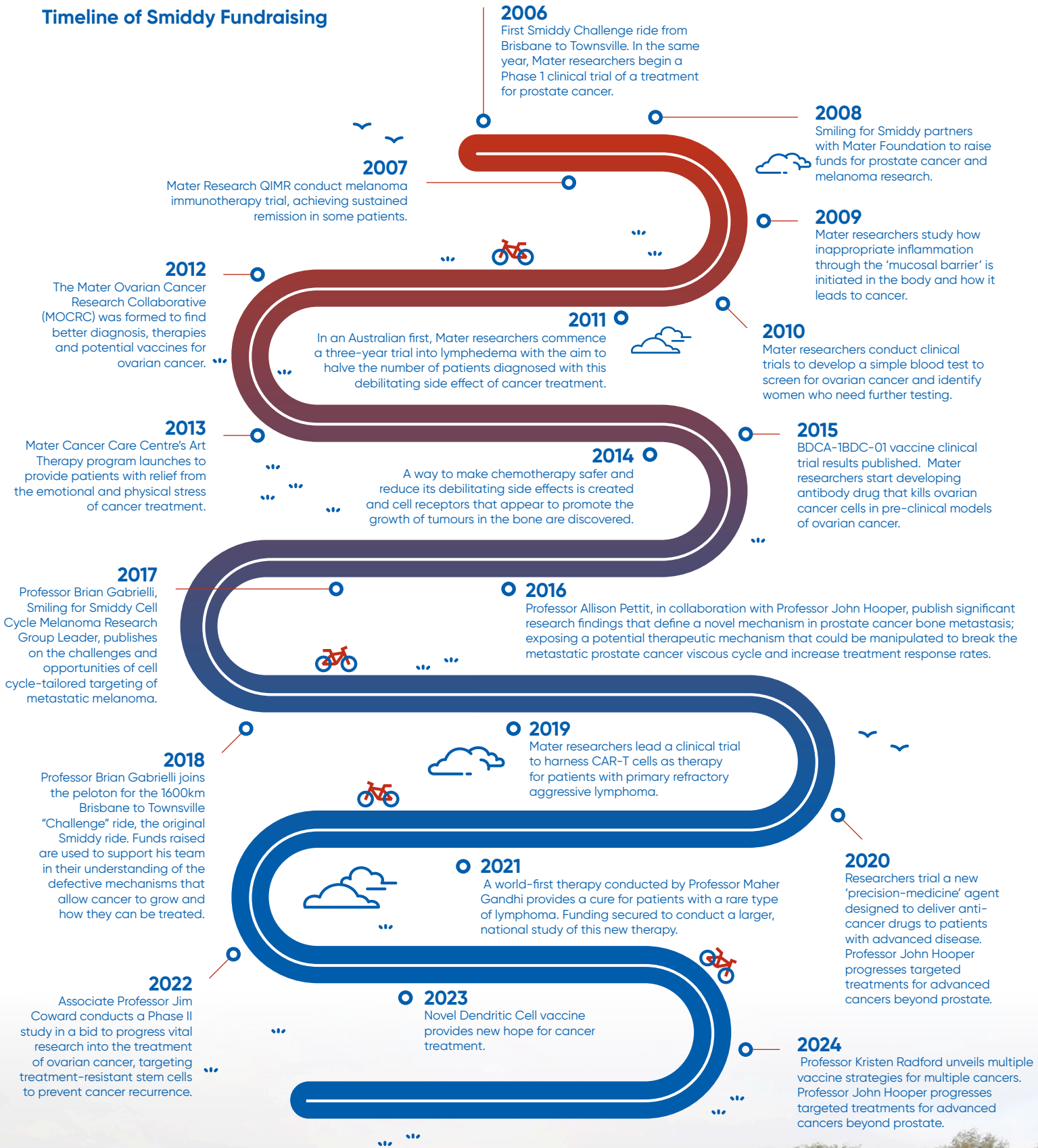
Clinical trials that offer hope and healing



Early-career researchers driving innovation



## Timeline of Smiddy Fundraising



\* (AIHW, 2024) - Cancer data in Australia, Overview of cancer in Australia, 2024 - Australian Institute of Health and Welfare.

